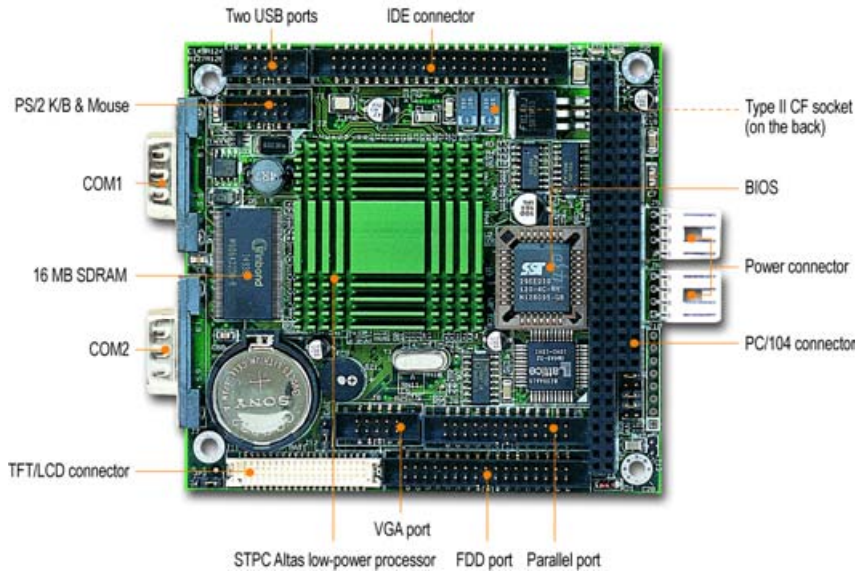


# PEB-1431V

PC/104 CPU module, based on low power STPC Atlas processor (System-on-Chip) with VGA/LCD



## Feature

- PC/104 CPU module (De facto standard for Embedded Computing)
- Reliable low power STPC Atlas 5x86 processor 133 MHz
- On-board standard VGA, TTL Panel interface and I/O
- On-board 16 MB SDRAM
- PC/104 expansion connector
- Type II CF socket for 8~320 MB CompactFlash disk

## System

CPU	Low power STPC Atlas processor 133MHz
Chipset	STPC Atlas System-on-Chip
Memory	On-board 16 MB SDRAM
L2 Cache	N/A
BIOS	Award (2Mb Flash ROM)
SSD	Type II Compact Flash Socket (Support 8~320MB Compact Flash or IBM Microdrive)
Storage Devices	Two EIDE devices; two FDDs
Watchdog Timer	Adjustable via hardware jumper with interval resolution setting from 0.5 sec. to 64 sec.
Expansion Interface	PC/104 (ISA bus)
Hardware Monitoring	N/A
Power Requirement	+5V@1.6A
Dimension	96(L) x 90(W) mm; 3.8"(L)x 3.5"(W)
Environmental	Operation temperature: 0~55 °C Storage temperature: -20~75 °C Operation humidity: 5~95%

## I/O

MIO	RS-232 x1, RS-422/485 x1, Parallel port x1
IrDA	N/A
Ethernet	N/A
Audio	N/A
USB	2
Mouse & K/B	1

## Display

Chipset	STPC Atlas System-on-Chip
Memory Size	Up to 4 MB shared memory
Resolution	1280 x 1024 x 8bpp @ 75Hz
LCD interface	TTL, 18-bit
Video-in/TV-out	N/A

## Ordering Information

### Standard

PEB-1431V Low Power STPC Atlas 133MHz processor based PC/104 CPU module with VGA

### Packing List

User's manual	x1
Utility CD	x1
HDD cable	x1
FDD cable	x1
two Serial port cable with bracket	x1
one Serial port cable with bracket	x1



Stack type



Carrier type